



# Instruction to use Hutch ICE as Wireless Modem

# Wireless Modem Instruction

## Agenda

- Installation for Windows 2000/Windows XP
- Instruction for Windows 98/Me

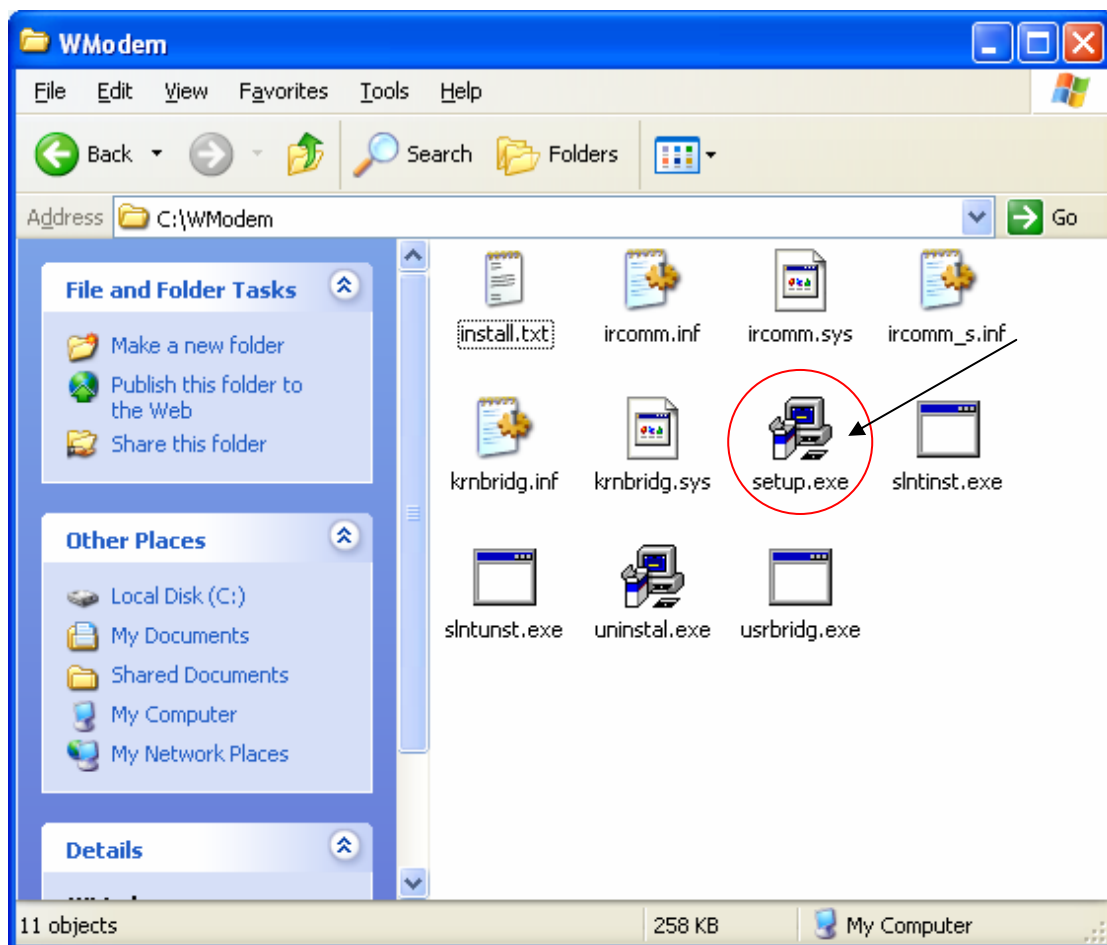
## Necessary files

1. **irdaw2k.zip** – Driver for Windows 2000 and Windows XP Home/Professional (If you're using Windows Me/98, you don't need to download this file)

## Installation Instruction

### Windows 2000/Windows XP

1. Unzip “**irdaw2k.zip**” into C:\WModem.
2. Run “**setup.exe**” in C:\WModem



## Hutch ICE – Instruction to use Hutch ICE as Wireless Modem

3. The setup utility will install driver into your notebook or PC. If you found the “**Hardware installation**” windows appear. Click “**Continue Anyway**” button to continue the installation.

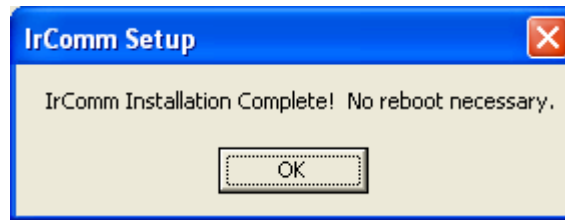


4. After click the button, you'll prompt to click “**Continue Anyway**” in other window. Click the button to continue installation.

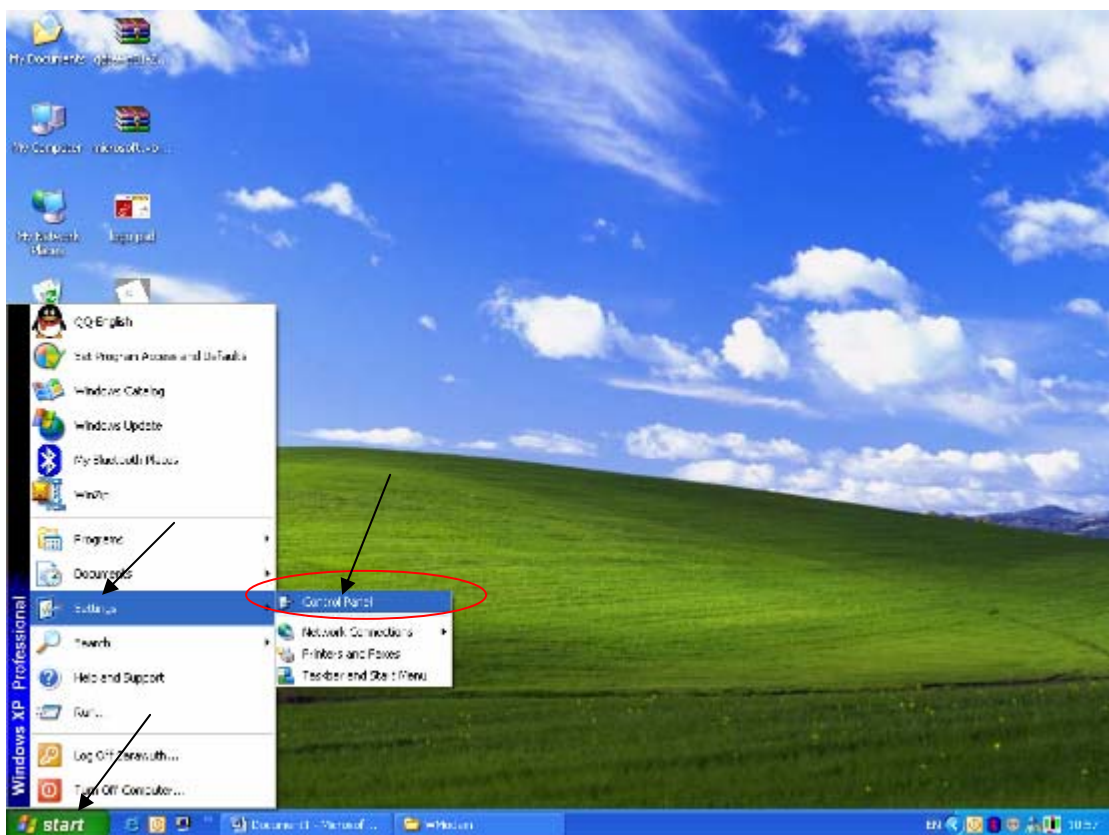


## Hutch ICE – Instruction to use Hutch ICE as Wireless Modem

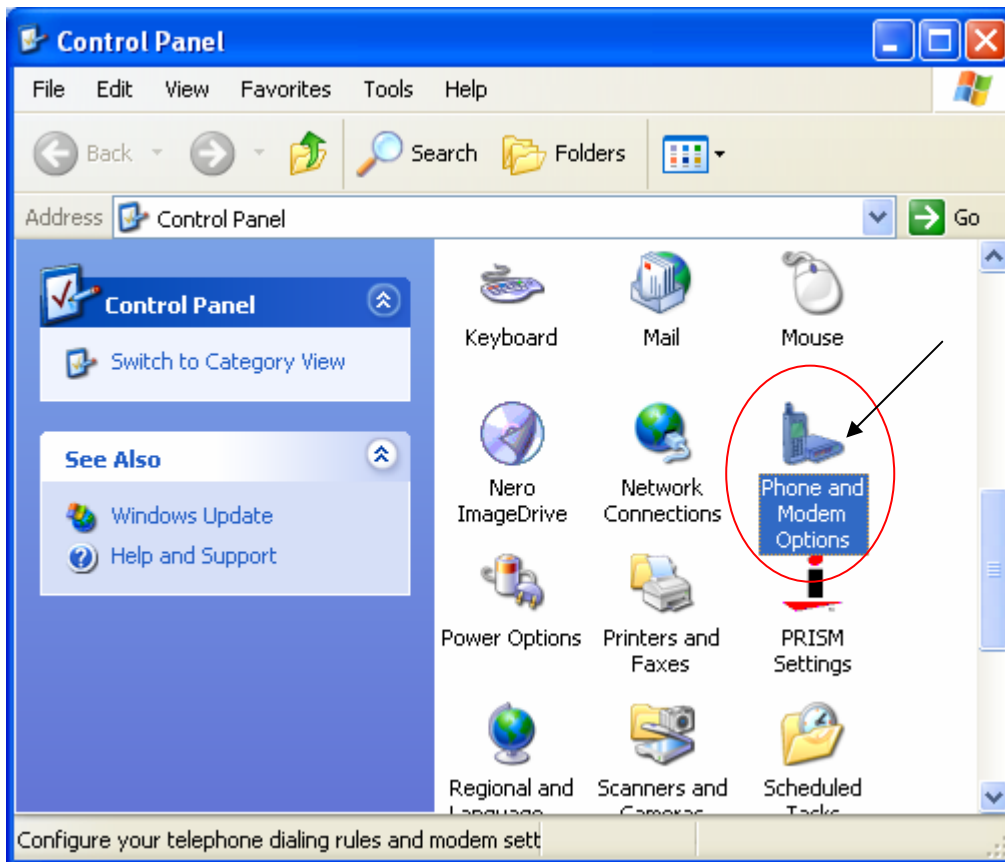
- Then, the installation is complete and finished screen shown up. Click “OK” to finish.



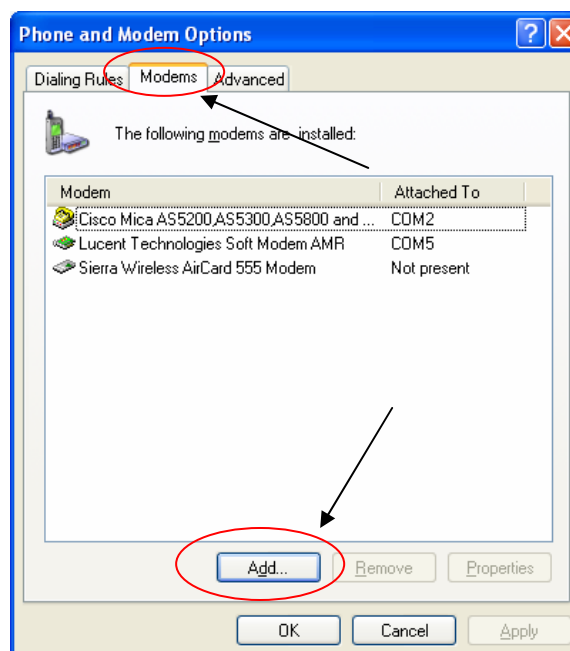
- Before continue to create new dialup connections, add the new modem; by go to the “Control Panel”. Click **Start -> Settings -> Control Panel**.



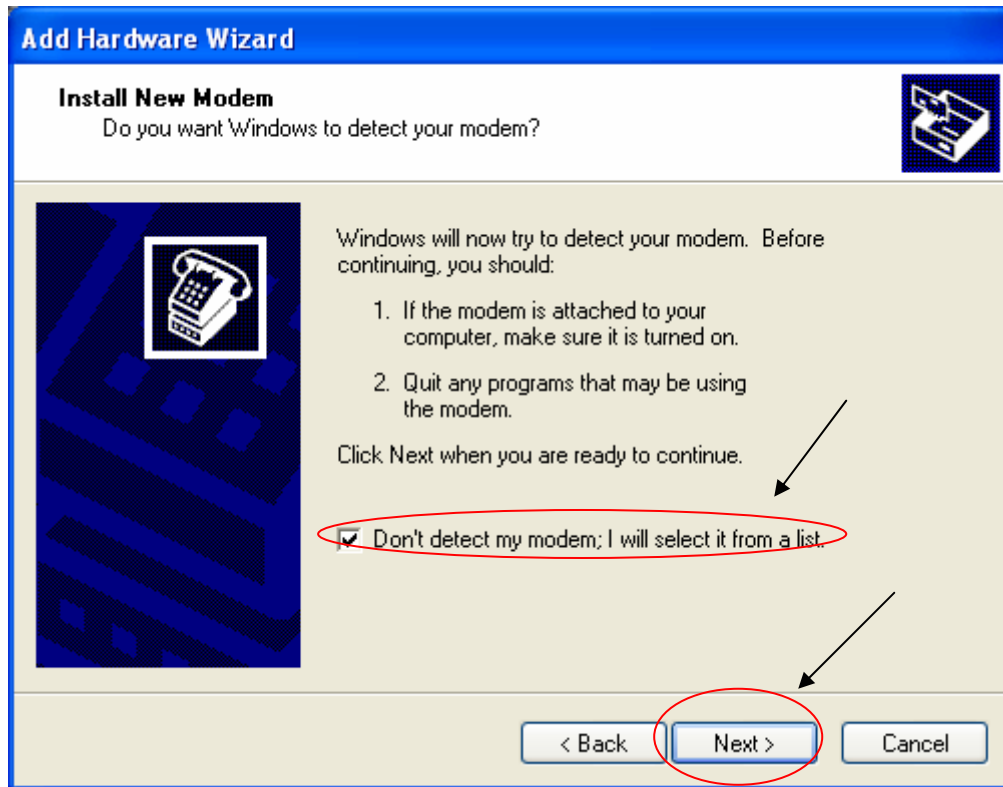
7. Click on “Phone and Modem Options”



8. Click the “Modem tab” and press “Add” button.

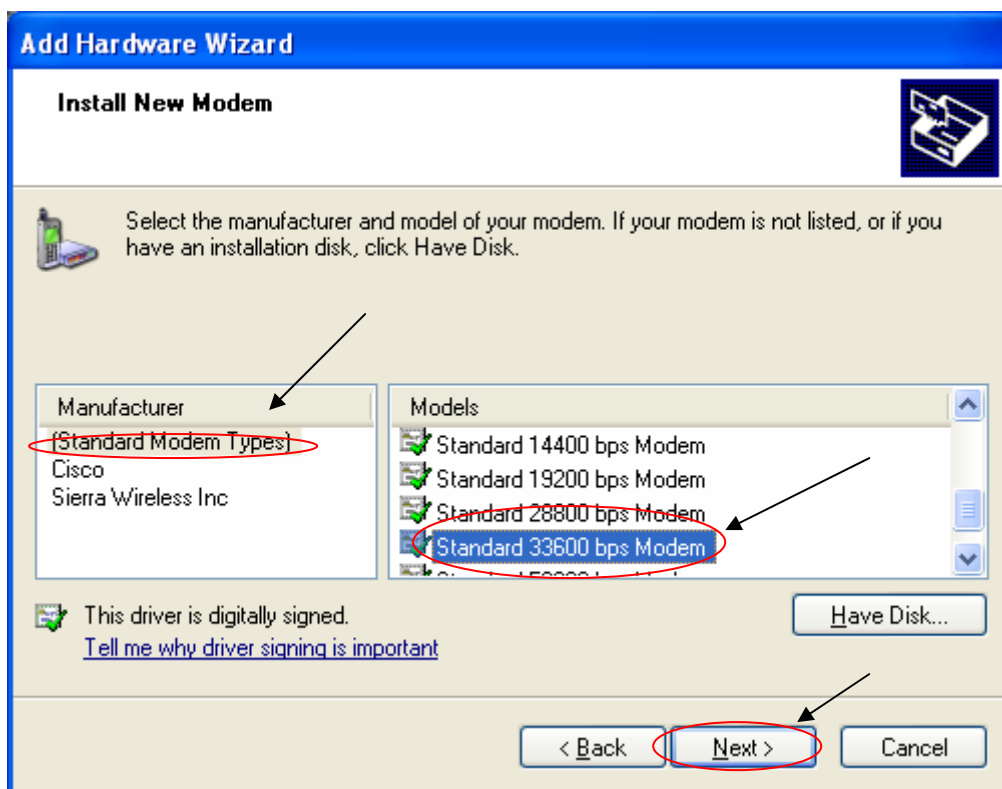


9. Check the “**Don’t detect my modem; I will select it from a list**” Then press “**Next**”.

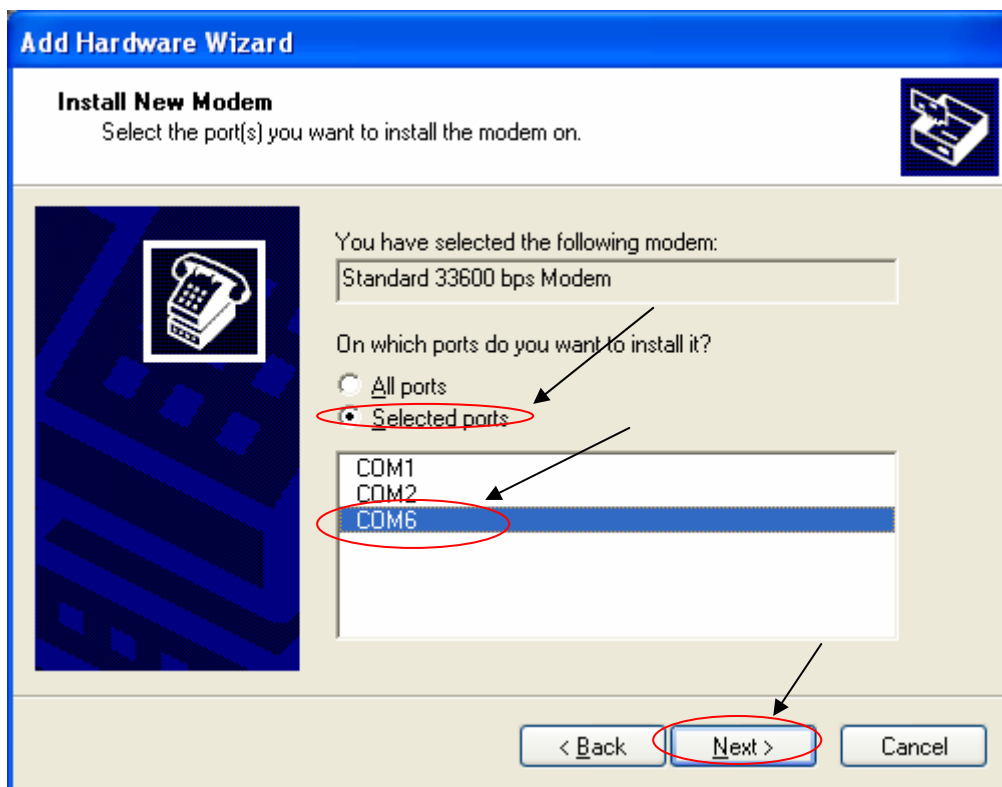


10. Choose “**(Standard Modem Types)**” manufacturer. And “**Standard 33600 bps Modem**”. Then press “**Next**”.

## Hutch ICE – Instruction to use Hutch ICE as Wireless Modem

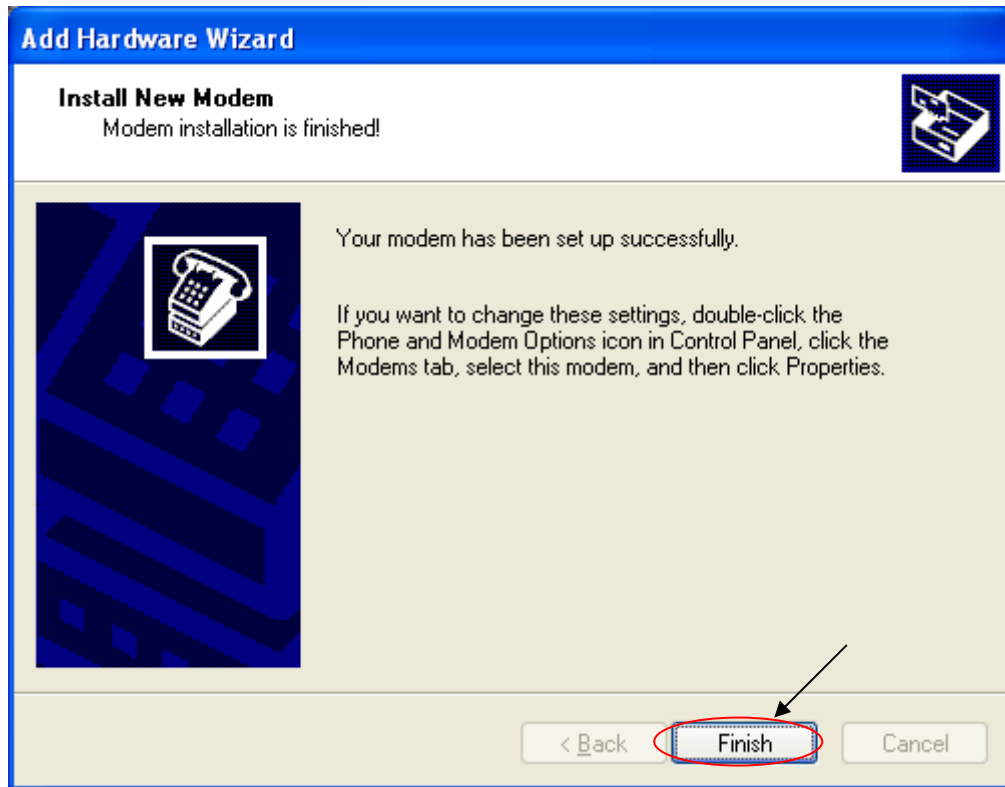


11. Click the “**Selected ports**”. And choose the new COM port that appears on your system. This example is “**COM6**”. Then click “**Next**”.



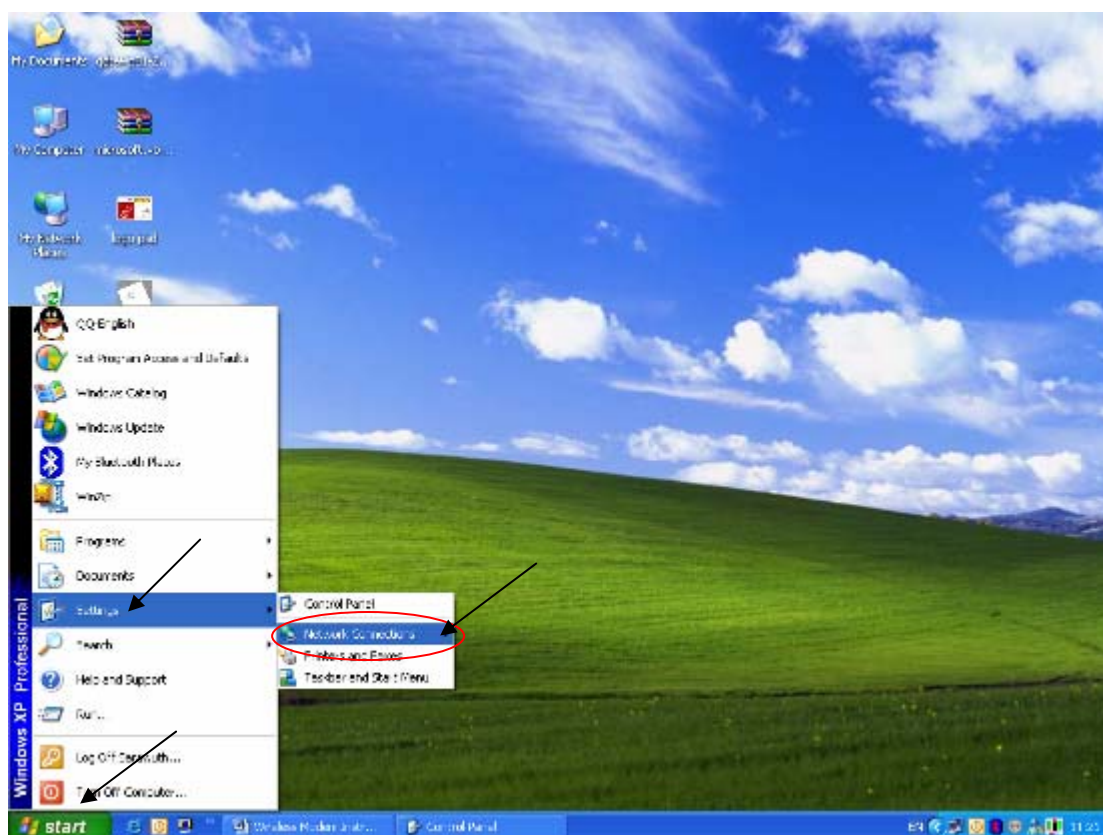
## Hutch ICE – Instruction to use Hutch ICE as Wireless Modem

12. Wait for a while until the successful added modem windows appears. Then click “**Finish**”.

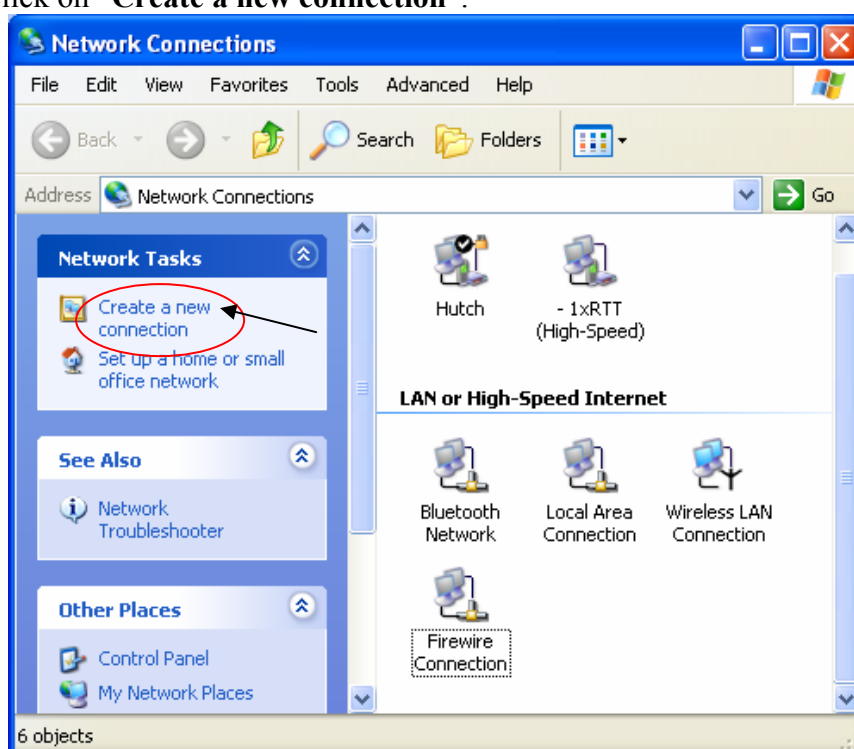


## Hutch ICE – Instruction to use Hutch ICE as Wireless Modem

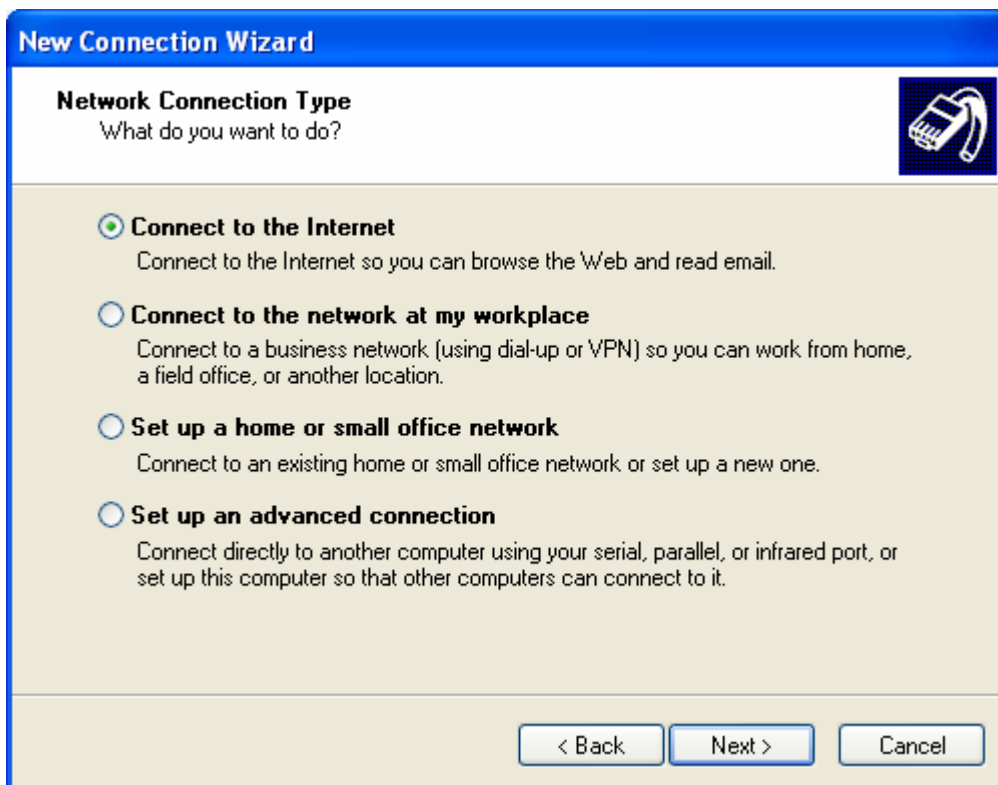
13. Create new dialup connections; by click **Start-> Settings -> Double Click on Network Connections**.



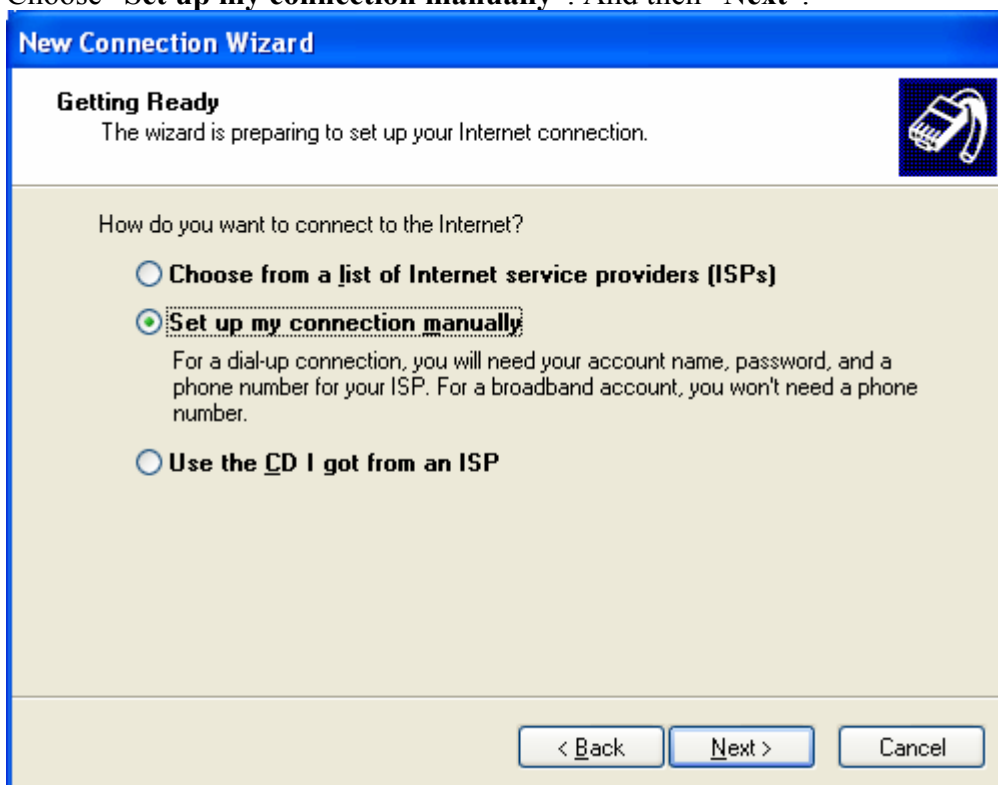
14. Click on “**Create a new connection**”.



Choose “**Connect to the Internet**”. Then click “**Next**”.

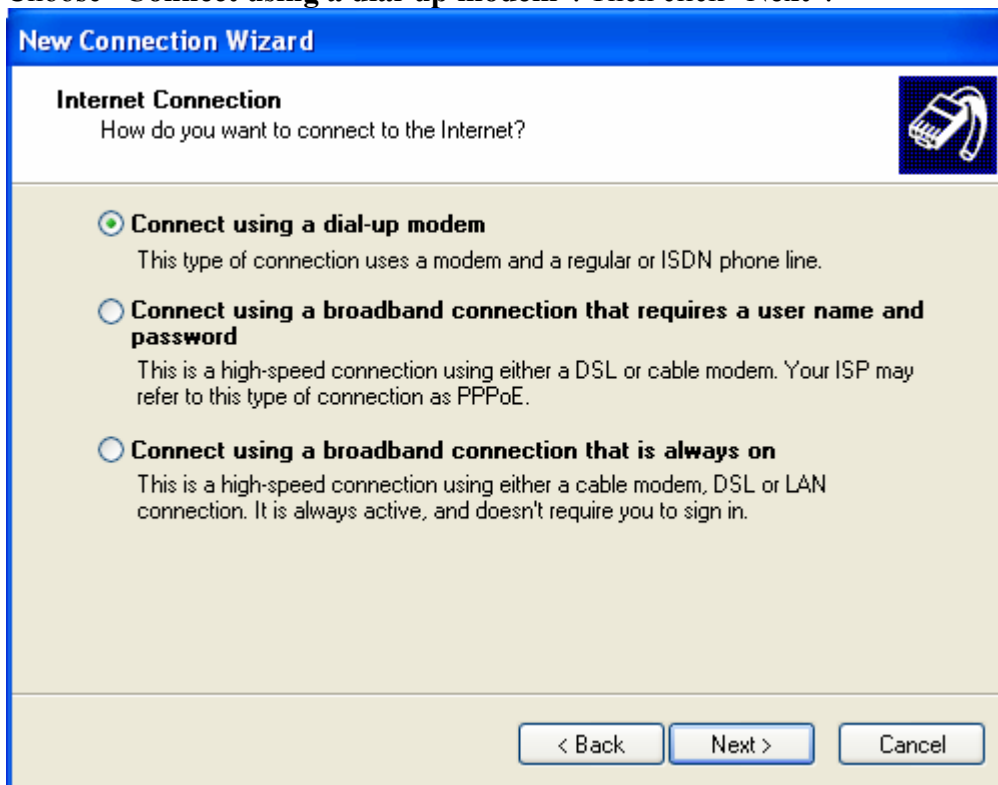


Choose “**Set up my connection manually**”. And then “**Next**”.

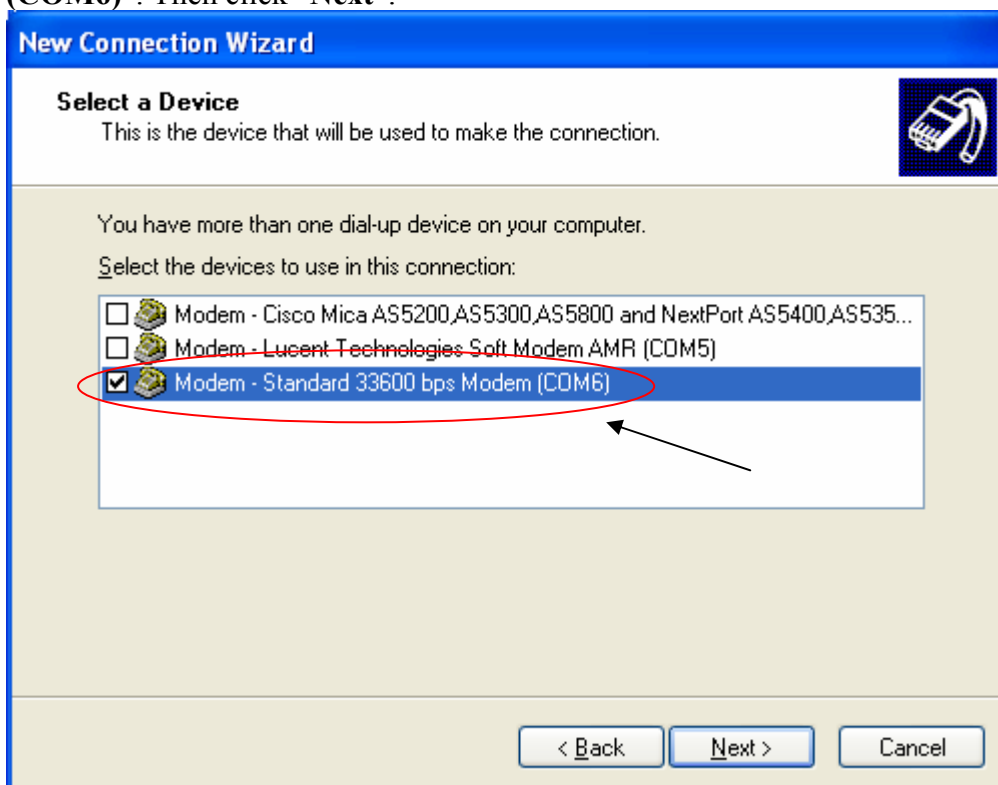


## Hutch ICE – Instruction to use Hutch ICE as Wireless Modem

Choose “Connect using a dial-up modem”. Then click “Next”.

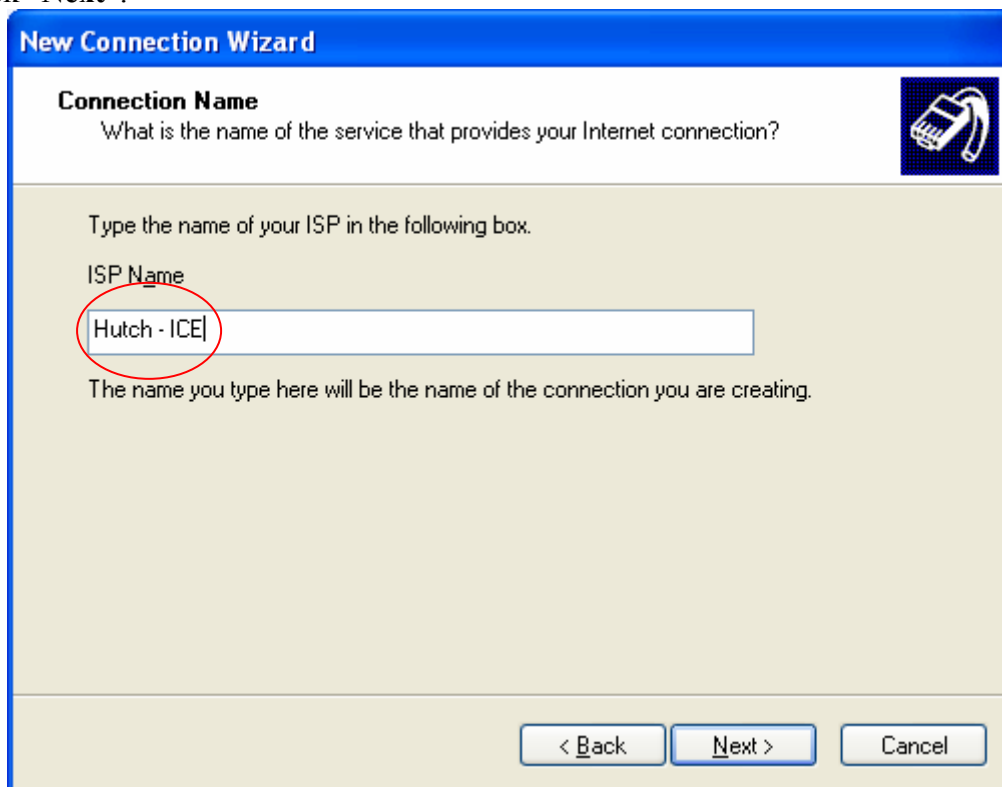


Choose the new added modem; example is “Standard 33600 bps Modem (COM6)”. Then click “Next”.



## Hutch ICE – Instruction to use Hutch ICE as Wireless Modem

Type “**Hutch – ICE**” as ISP Name (You can change to anything that you want). Then click “**Next**”.



**New Connection Wizard**

**Connection Name**  
What is the name of the service that provides your Internet connection?

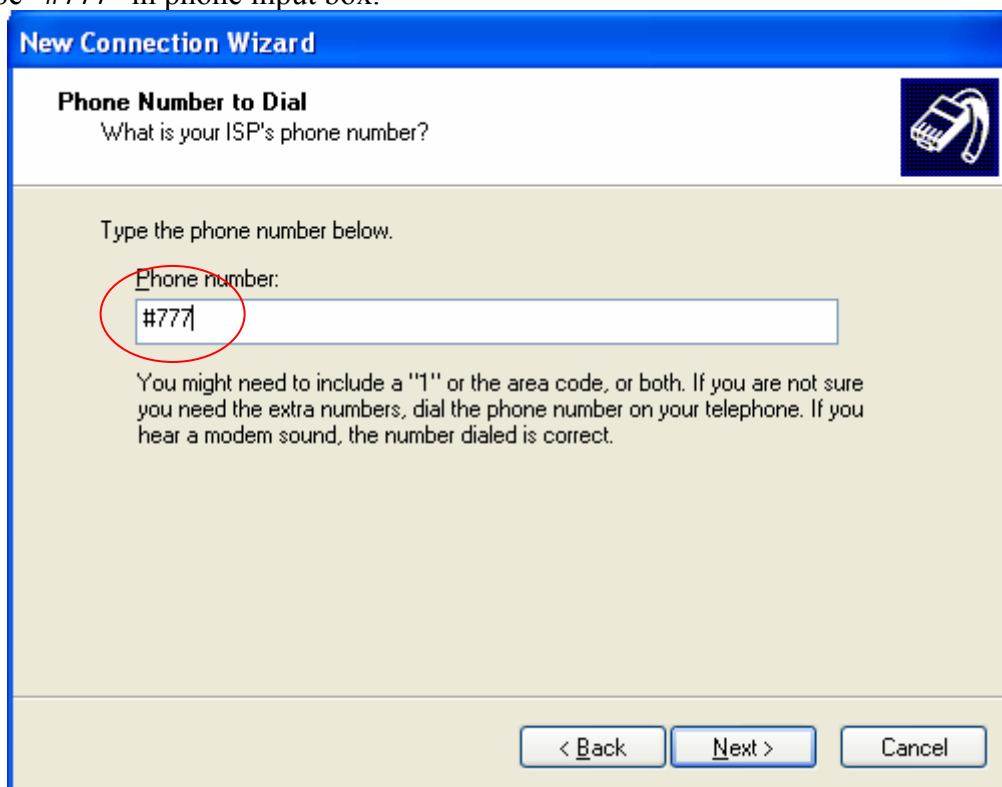
Type the name of your ISP in the following box.

ISP Name  
Hutch - ICE

The name you type here will be the name of the connection you are creating.

< Back   Next >   Cancel

Type “**#777**” in phone input box.



**New Connection Wizard**

**Phone Number to Dial**  
What is your ISP's phone number?

Type the phone number below.

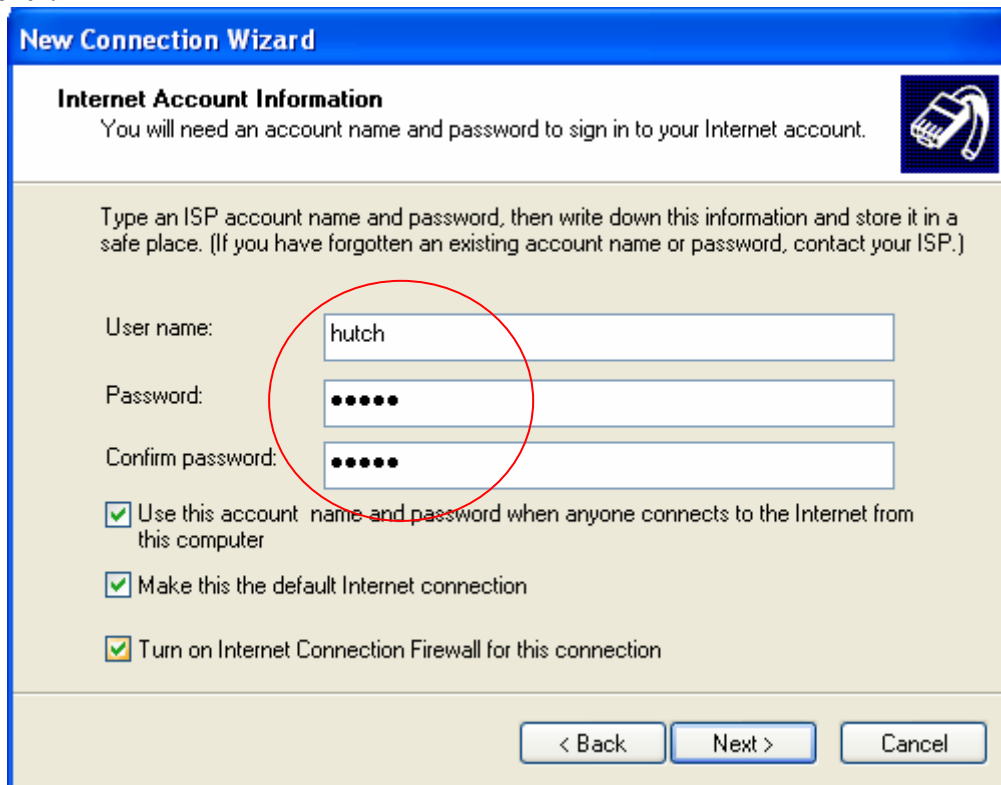
Phone number:  
#777

You might need to include a "1" or the area code, or both. If you are not sure you need the extra numbers, dial the phone number on your telephone. If you hear a modem sound, the number dialed is correct.

< Back   Next >   Cancel

## Hutch ICE – Instruction to use Hutch ICE as Wireless Modem

Type “**hutch**” in user name/password/confirm password input box. Then click “**Next**”.



**New Connection Wizard**

**Internet Account Information**  
You will need an account name and password to sign in to your Internet account.

Type an ISP account name and password, then write down this information and store it in a safe place. (If you have forgotten an existing account name or password, contact your ISP.)

User name:

Password:

Confirm password:

Use this account name and password when anyone connects to the Internet from this computer

Make this the default Internet connection

Turn on Internet Connection Firewall for this connection

< Back   Next >   Cancel

Click “**Finish**” to finish setting up new connection.



**New Connection Wizard**

**Completing the New Connection Wizard**

You have successfully completed the steps needed to create the following connection:

**Hutch - ICE**

- Make this the default connection
- This connection is firewalled
- Share with all users of this computer
- Use the same user name & password for everyone

The connection will be saved in the Network Connections folder.

Add a shortcut to this connection to my desktop

To create the connection and close this wizard, click Finish.

< Back   Finish   Cancel

## Hutch ICE – Instruction to use Hutch ICE as Wireless Modem

You'll find new “**Hutch – ICE**” in Network Connections windows.

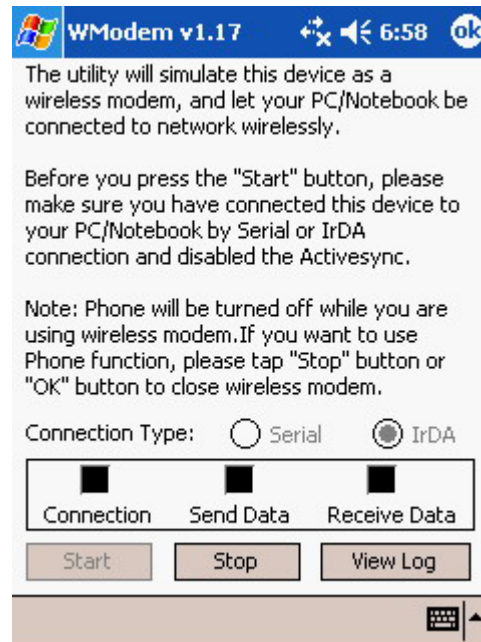


Now you're ready to connect the Hutch ICE with your Notebook or PC.

15. Terminate all data/voice connection on Hutch ICE by pressing and hold the Hang Up button about 5 seconds and release. The connection icon will show as normal signal.
16. Start the WModem utility on Hutch ICE; by click **Start -> Programs -> WModem**.

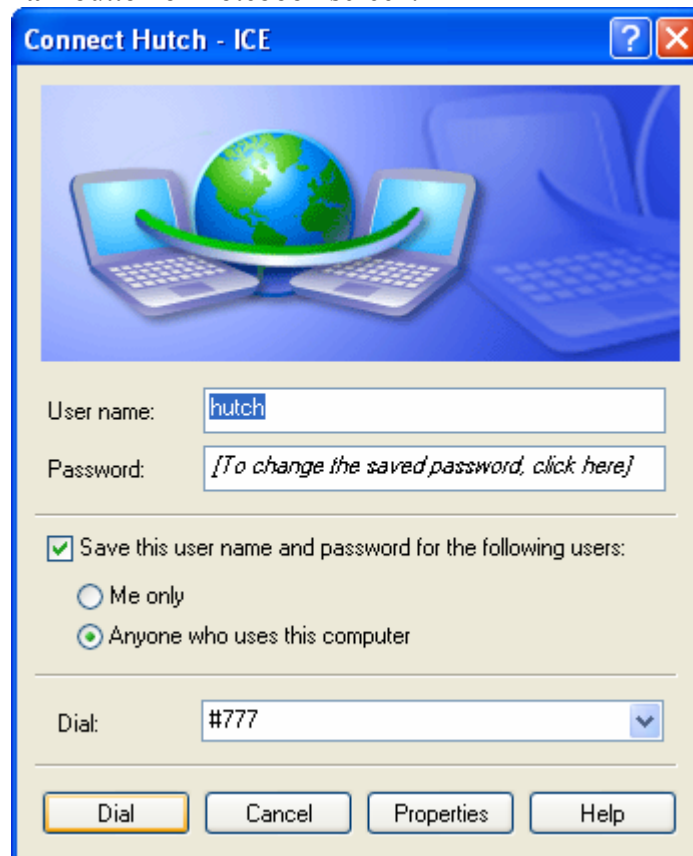
## Hutch ICE – Instruction to use Hutch ICE as Wireless Modem

17. Choose the “**IrDA**” and then Press “**Start**” button.

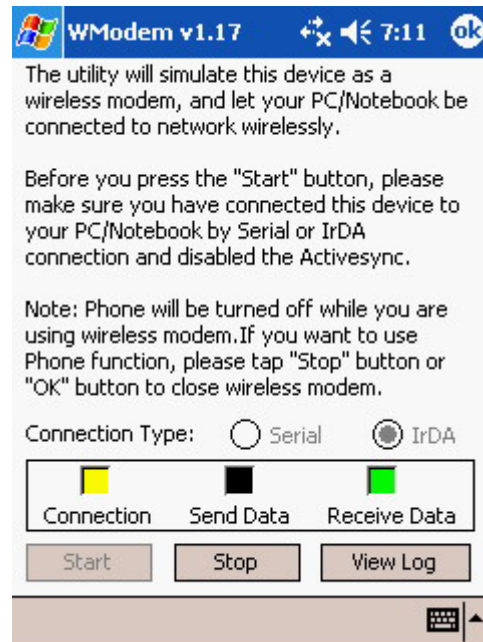


Your Hutch ICE will ready to use as Wireless Modem. Then align the Hutch ICE infrared port with your notebook infrared port.

18. Click “**Dial**” button on notebook screen.



19. Then your Hutch ICE and notebook will communicate and your Hutch ICE will act as wireless modem.



20. To end the data connection. Click “**Disconnect**” from your Notebook. Then Click “**Stop**” button on your Hutch ICE.

## Windows 95/98/Me

1. Under windows 95/98/Me the infrared device is handled as a serial COM port. You **\*don’t need\*** to install the “**irdaw2k.zip**” on those OS.
2. Add new standard modem; by go to **Start > Settings > Control Panel**, double click on “**Modems**”
3. Select “**General**” tab and click “**Add**” button.
4. Select “**Others**” and click “**Next**” button.
5. Select “**Don’t detect my modem; I will select it from a list**” and click “**Next**” button.
6. Under “**Manufacturers**”, select “**(Standard modem types)**”. Under Models, select “**Standard 33600 bps modem**”.
7. Click “**Next**” button and select “**Virtual Infrared COM Port**”. Click “**Next**” and click “**Finish**”.



## **Hutch ICE – Instruction to use Hutch ICE as Wireless Modem**

---

8. We're finish add new Modem. Next step, we're going to add new Connections.
9. On notebook, double-click on "**My Computer**" and then "**Dial-Up Networking**".
10. Double-click on "**Make New Connection**".
11. Type in "**Hutch – ICE**" and select the modem which you have been created.
12. Under "**Telephone number**", type in "**#777**". Click "**Next**" and click "**Finish**".
13. You'll get new connection name "**Hutch – ICE**" in Dial-up Manager.
14. Double-click on "**Hutch – ICE**".
15. Type in the following:
  - User name: **hutch**
  - Password: **hutch**
16. On Hutch ICE, close all data/voice connection; press and hold the hang-up button about 5 seconds, then release. The connection icon on Hutch ICE title bar will change to normal signal.
17. On Hutch ICE, start the WModem utility; by go to **Start -> Programs -> tab on WModem**.
18. Choose "**IrDA**", and then click "**Start**".
19. Align the Hutch ICE infrared port with notebook infrared port.
20. On Notebook, click "**Connect**". After authenticated, your notebook is ready for serf the net.
21. To end the data connection. Click "**Disconnect**" from your Notebook. Then Click "**Stop**" button on your Hutch ICE.